



PANEL COLOR  
BLACK CRYSTAL  
BC

Available in King, Queen and Full XL  
NO FOUNDATION/BOX SPRING REQUIRED. JUST MATTRESS

**\*PLEASE READ CAREFULLY:**

This is a recessed bed frame designed to keep the mattress from sliding. The mattress **should** fit securely **INSIDE** the bed frames. Make sure your mattress is not too small or too large. Please measure your mattress size first. (See **\*INSIDE FRAME SIZE:**)

If you have any questions or concerns, please ask your sales person

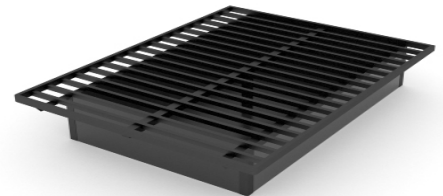
**King Mattress: 76" W x 80" L    Queen Mattress: 62" W x 80" L    Full XL: 53" W x 80" L**

**\*INSIDE FRAME SIZE: 76¼ W x 80¼ L"**



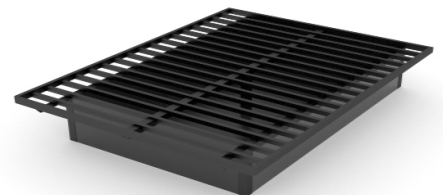
**KING MATTRESS SIZE: 76" W x 80" L**

**\*INSIDE FRAME SIZE: 60¼ W x 80¼ L"**



**QUEEN MATTRESS SIZE: 62" W x 80" L**

**\*INSIDE FRAME SIZE: 53½ W x 80¼ L"**



**FULL XL MATTRESS SIZE: 53" W x 80" L**

Item	Item Number	Overall Size
King	HSF 5600CCB 6BM KIT	78½" W x 82 ½" L x 17" H
Queen	HSF 5600CCB 5BM KIT	62½" W x 82 ½" L x 17" H
Full XL	HSF 5600CCB 4XLBM KIT	55 ½" W x 82 ½" L x 17" H

**Metal Recessed Bed Frame**

Construction	<ul style="list-style-type: none"> <li>Fully welded steel.</li> <li>Rust resistant epoxy powder coated finish Black.</li> <li>Height of the bed frame is 17"H.</li> </ul>
Materials Included	<ul style="list-style-type: none"> <li>x1 Metal Bed Frame</li> <li>x4 Corner Braces legs.</li> <li>x16-1/4" - #20 Black Bolts.</li> <li>x16-5/16" Washer.</li> <li>x16-1/4" - 20 Hex Nut.</li> <li>x1 Metal Center leg with Leveler.</li> <li>x8-3/4" Wood Screws.</li> <li>x2 Metal Bed Frames. (King Only)</li> <li>x4 Bolts/x4 Washers/x4 Hex nuts. (King Bed Only - to Connect the frames.)</li> </ul>
Materials	<ul style="list-style-type: none"> <li>Powder coated steel top frame - Black.</li> <li>18 horizontal triangle slats for mattress support.</li> <li>4- panels with High Pressure Laminate.</li> <li>Bed Frame ships KD. Assembly is required.</li> <li>DFM warranties its products and craftsmanship for 5 years from time of delivery.</li> </ul>

